

Arlington  
Darrington →

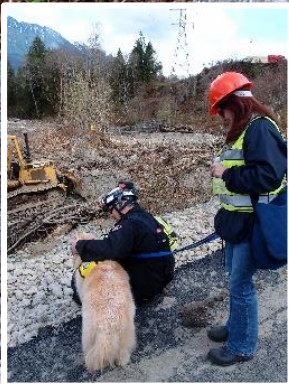


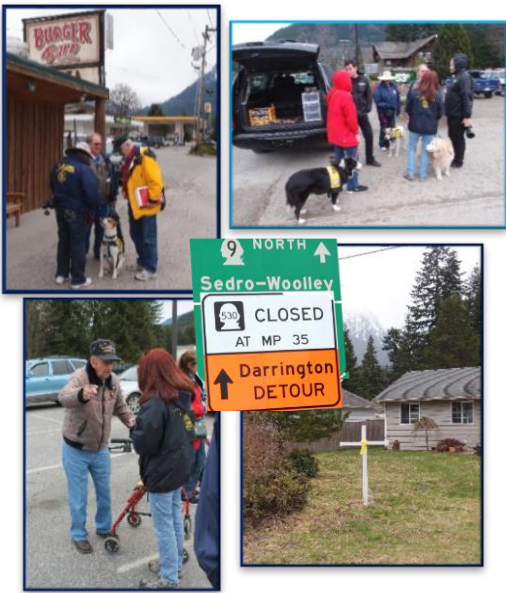
Visiting the Mudslide area



DOSO FIRE DEPT.  
THANK YOU FOR  
YOUR PRAYERS  
AND SUPPORT

VALUE  
WHAT YOU CAN.  
WHO YOU CAN.  
WHEN YOU CAN.  
WHILE YOU CAN.  
DARRINGTON





We worked with Green Cross in accordance with Nationally-Approved Incident Command Protocols, in conjunction with HOPE Dogs, providing relief to exhausted local crisis canine teams. Our EMM Deployment was just one of more than 100 government agencies, non-profit organizations and businesses from across the state and country that came together in a massive show of support in the aftermath of the mudslide

K9 Maxx, K9 Suzie, K9 Georgie



On Saturday, March 22, 2014, at 10:37 a.m. local time, a major [mudslide](#) occurred 4 miles east of [Oso, Washington](#), United States, when a portion of an unstable hill collapsed, sending mud and debris across the North Fork of the [Stillaguamish River](#), engulfing a rural neighborhood, and covering an area of approximately 1 square mile. As of April 11, 2014, the Snohomish County Medical Examiner's office confirmed that 36 people had died and 7 people remained missing or unaccounted for. Excluding landslides caused by [volcanic eruptions](#), [earthquakes](#) or [dam collapses](#), this is the deadliest single landslide event in United States history.

Extra Mile Ministries  
P. O. Box 6409  
Oceanside CA 92052

[www.faceofcrisis.org](http://www.faceofcrisis.org)

Chaplain Ralph Buchhorn  
760-439-4381



# Oso, Washington Mudslide

## Extra Mile K9 Crisis Response